

## E. TECHNIQUE

### 1. PIANO

- a) *una corda*, use soft pedal
- b) *tre corde* release soft pedal
- c) *con pedale* with (sustaining) pedal
- d) *senza pedale*, *sans pédale* (F) without pedal
- e) *avec sécheresse* (F) with dryness
- f) *il basso marcato* accent bass line
- g) *mano destra* (*md*) the right hand  
*main droite* (*md*)
- h) *mano sinistra* (*ms*) the left hand  
*main gauche* (*mg*)

### 2. TOUCH

- a) *delicato* delicately
- b) *légèrement* (F) lightly
- c) *leicht* (G), *leggiero* lightly
- d) *pesante* heavily

### 3. STRINGS

- a) *arco* with the bow
- b) *col legno* with the back of the bow
- c) *flautato* use natural harmonics
- d) *martellato* hammered
- e) *pizzicato* plucked
- f) *spiccato* bounced over the strings
- g) *sul ponticello* near the bridge

### 4. OTHER

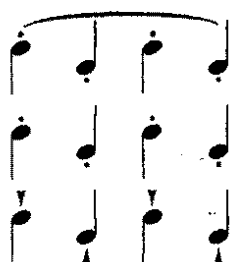
- a) *ad libitum* at choice
- b) *en dehors* (F) standing out
- c) *glissando* sliding over the notes
- d) *naturale* in the ordinary way
- e) *parlando* in a speaking style
- i) *sec* (F) 'dry' – stop the sound, by either hand (on drum skin) or releasing pedal (pno)

## F. ARTICULATION

**Portato**  
(slightly detached)

**Staccato**  
(detached)

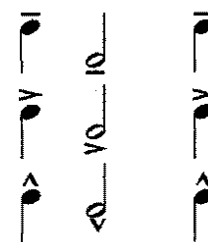
**Staccatissimo**  
(very detached)



**Tenuto**  
(light accent)

**Medium accent**

**Heavy accent**



## G. LINKING WORDS

Italian	English	French	German
a	at, to	à	zu
alla	in the style of	à	
ancora	again	encore	wieder
assai	rather, enough	assez	etwas
ben, bene	well / very	bien	sehr, höchst
con, (col, colla)	with, (with the)	avec	mit
di	of, of a	de	von
e, ed	and	et	und
il, la	the	le, la	der, die, das
ma	but	mais	aber, doch
meno	less	moins	
molto	very / a lot of / much	très / beaucoup de	voll, viel (= full)
non	not	non	nicht
più	more	plus	-er (at end of word)
poco	a little	peu	wenig, ziemlich
poco a poco	little by little	peu à peu	nach und nach
quasi, come	as if, like	comme	
sempre	always, still	toujours	immer, noch
senza	without	sans	ohne
subito	suddenly	soudain, tout à coup	
troppo	too, too much	trop	zu
uno	a, one	un, une	ein